

Smart Solutions for WTP Valves & Actuator Management with ALPINE'S Specially Designed DCV-24 Valve

Alpine Flowtech

- Experience
- Knowledge
- Dedication
- Action
- Support



॥ अविरत जल प्रदाय ॥



॥ अविर्त जल प्रदाय ॥

Disclaimer

The Idea of this presentation and product is to provide an alternative solution and not to defame any manufacturer of Sluice, Butterfly Valves, Connecting Accessories and Electric and Pneumatic Actuators, these manufacturers and service providers have been genuinely doing their good work and we appreciate the same. This product presentation is a Techno-Creative Manifestation with an intention to provide a Cost Effective, Operator Friendly, & a Sustainable Product.

Alpine Flowtech - 20

SMALL & RURAL WTP - AUTOMATION WITH ALPINE DCV-24 VALVES AND SOLENOID ACTUATORS. VERY ECONOMIC & SUSTAINABLE SOLUTION



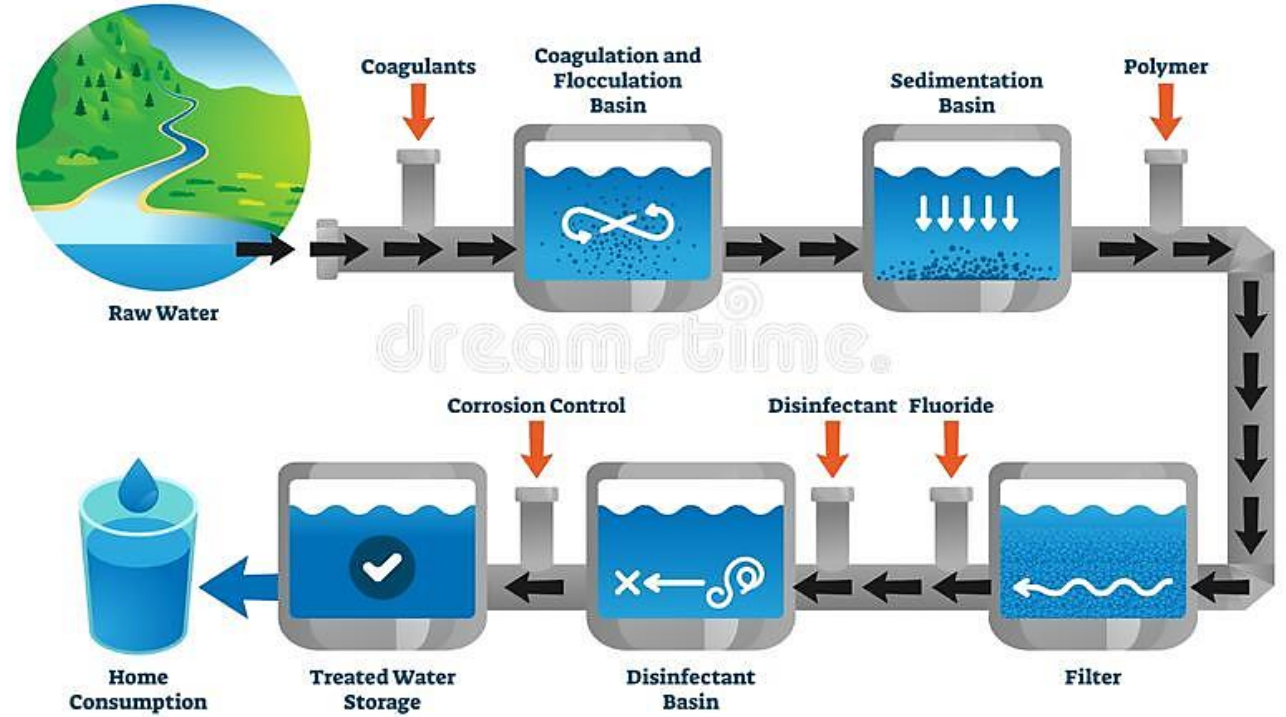
॥ अविरत जल प्रदाय ॥



ALPINE DCV-24



WATER PURIFICATION PLANT



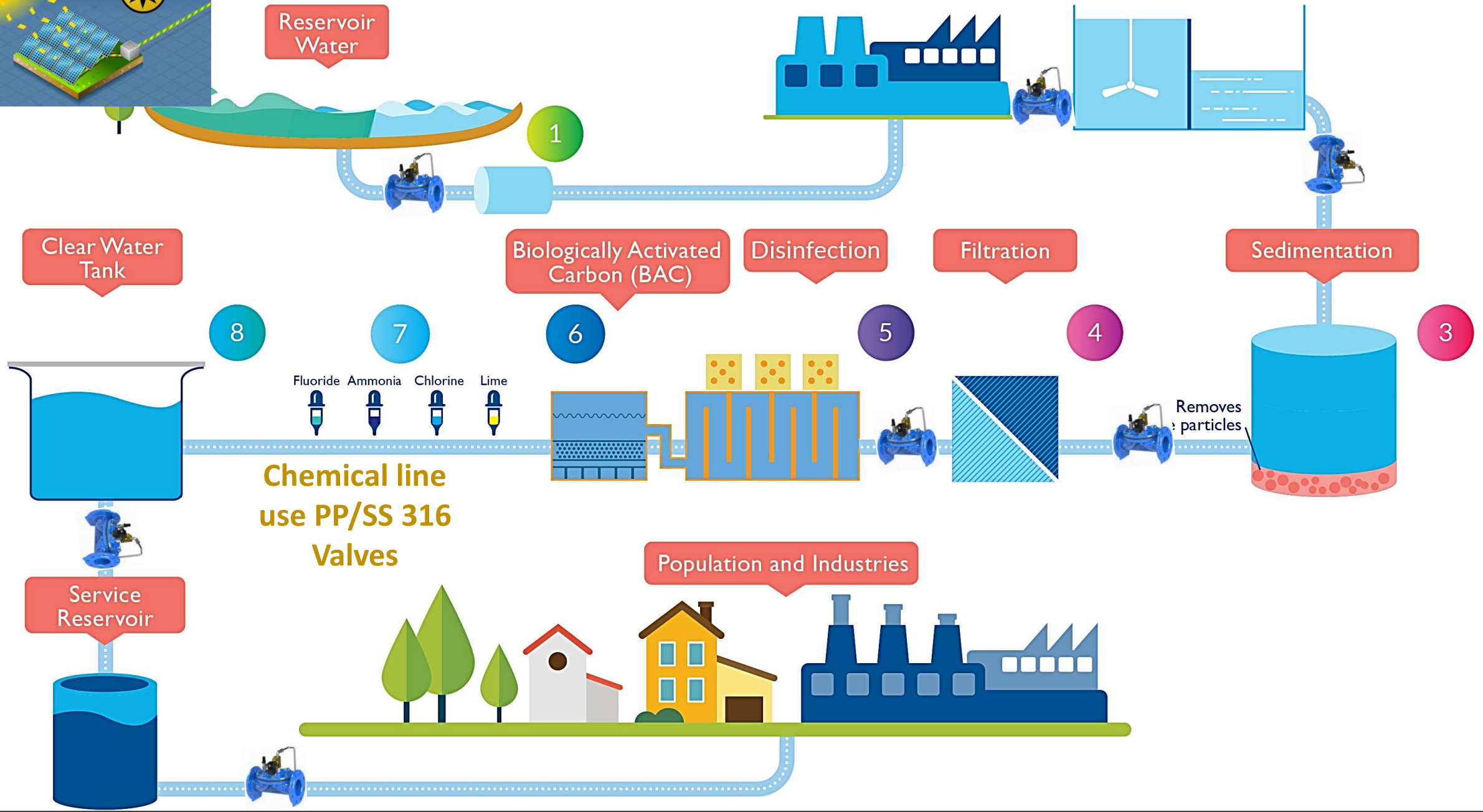
A NEW DIMENSION TO
THE WTP VALVES AND
ACTUATORS




SMART INEXPENSIVE DCV-24,
CONTROL VALVE + SOLENOID
ACTUATORS 12/24VDC.

IP 68

APPLICATIONS OF ALPINE DCV-24 VALVE





Installation &
Operation of
Conventional
Valves like SV, BFV
and Actuators

Expensive & Exhaustive BOQ & Operations Maintenance

Sluice & Butterfly Valves
Mostly Gear Operated

Electric/Pneumatic Actuators,
Compressors, Three Phase power
supply. Bulky Panels with
Substantial Integration. Very
expensive Regulating duty
actuators and Electronic
Positioner

AC Power
HT/LT Panels

Extended Spindles, Head
Stock, Anchor Bracket,
Universal Couplings, Caps,
Anchor Fasteners

Cable Tray, Walkway,
Exhaustive Pipe Gallery
and fixtures

Expensive & Exhaustive BOQ & Operations Maintenance

Gear Malfunction of Valves & Actuators. Cracked Wedge Groove of Sluice Valve

Unbalanced Torque resulting in frequent mechanical failures and expensive maintenance

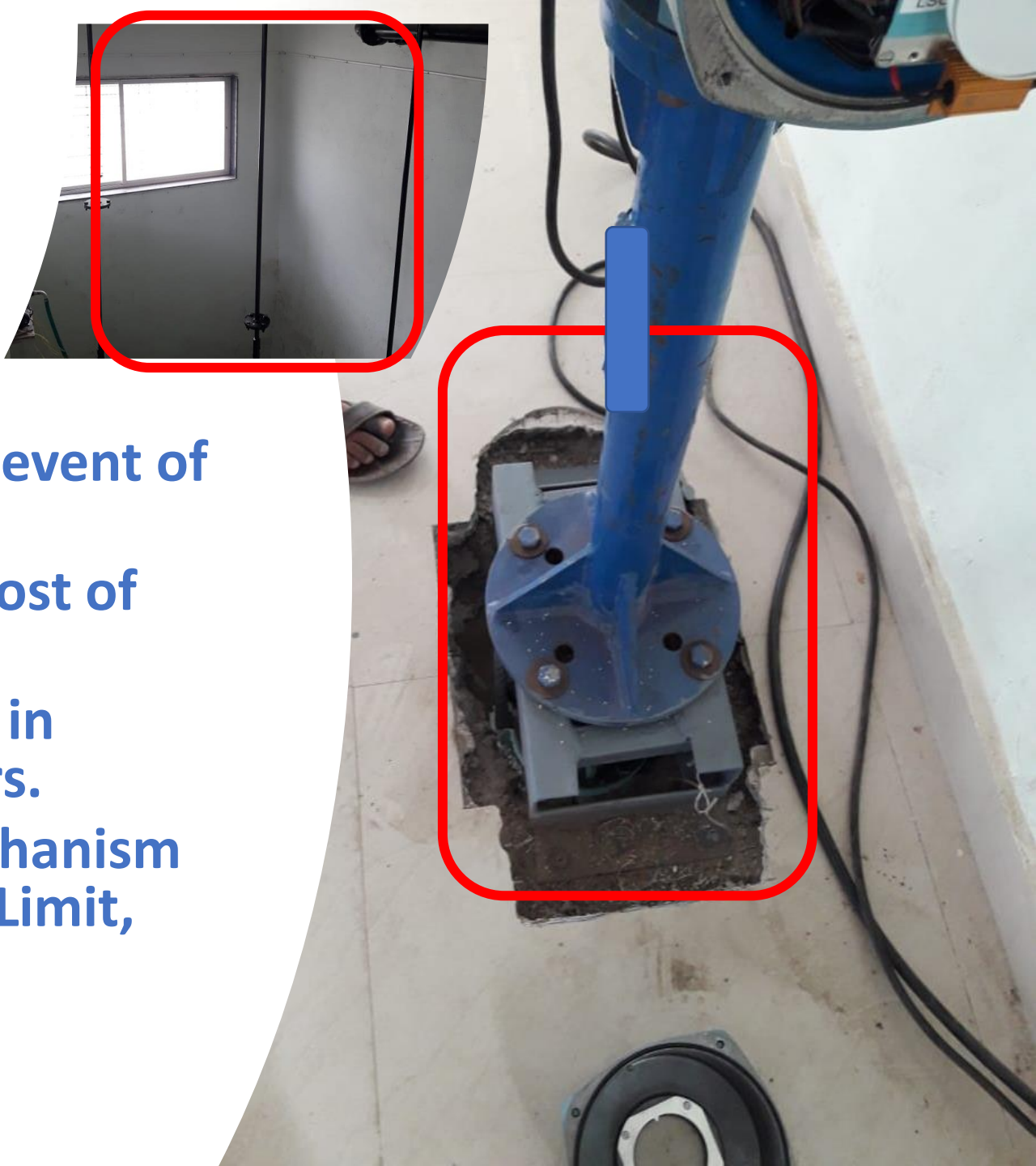
Expensive Cost of Power to Operate the plant

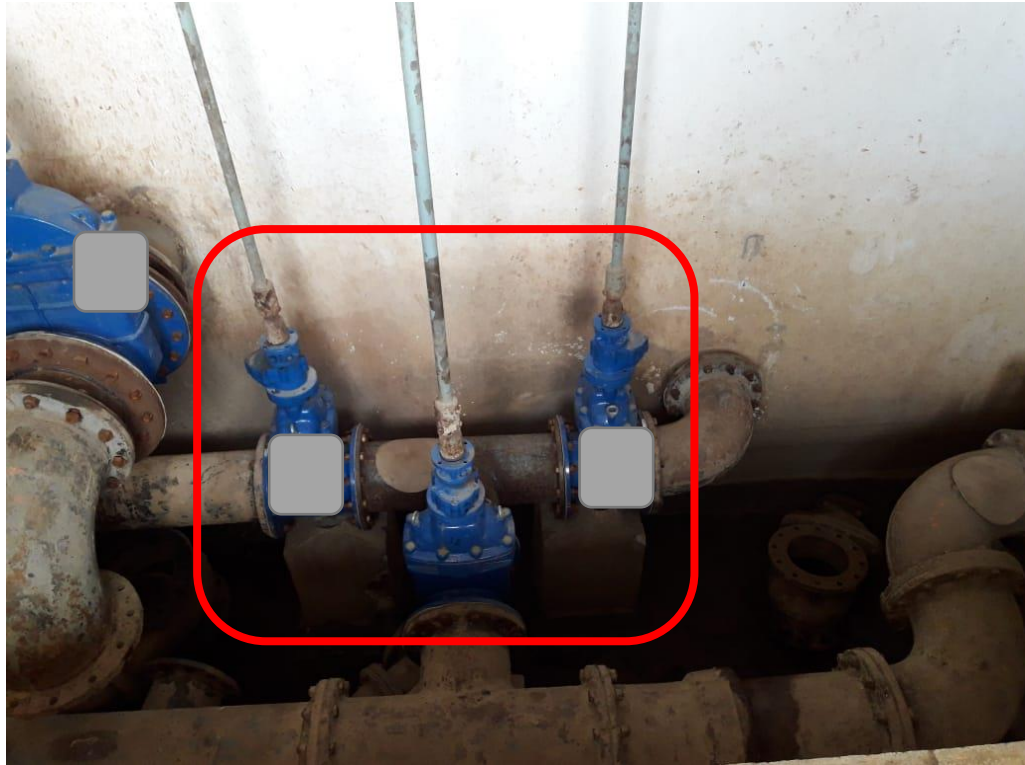
Difficult Retrofitting work of Actuators if the installed valves were earlier manually operated.

Troublesome Manual Override of Valves. Poor Flow Characteristics of SV BFV, not stable for controlling.

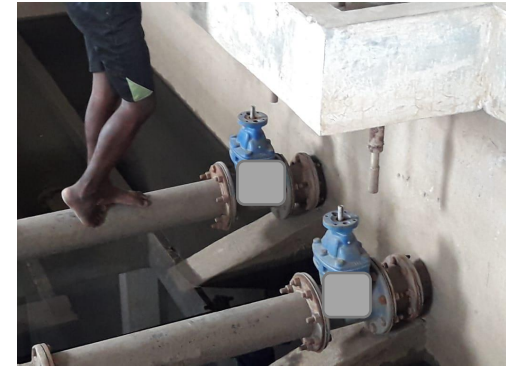
- **3 Phase Power Requirement**
- **Poor Head Stock Anchoring**
- **Congested Cable laying & Ducting**
- **Congested Walkway**

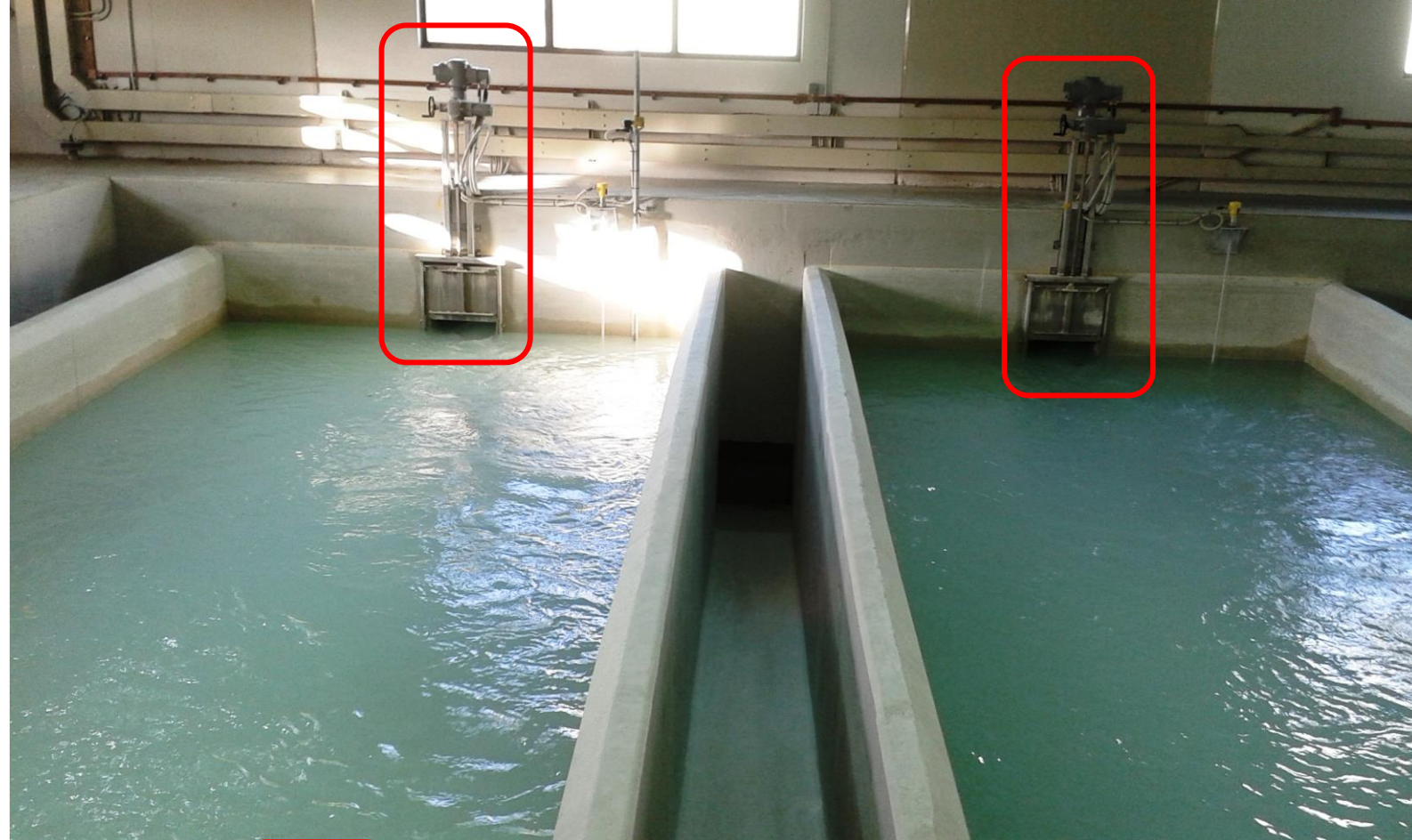
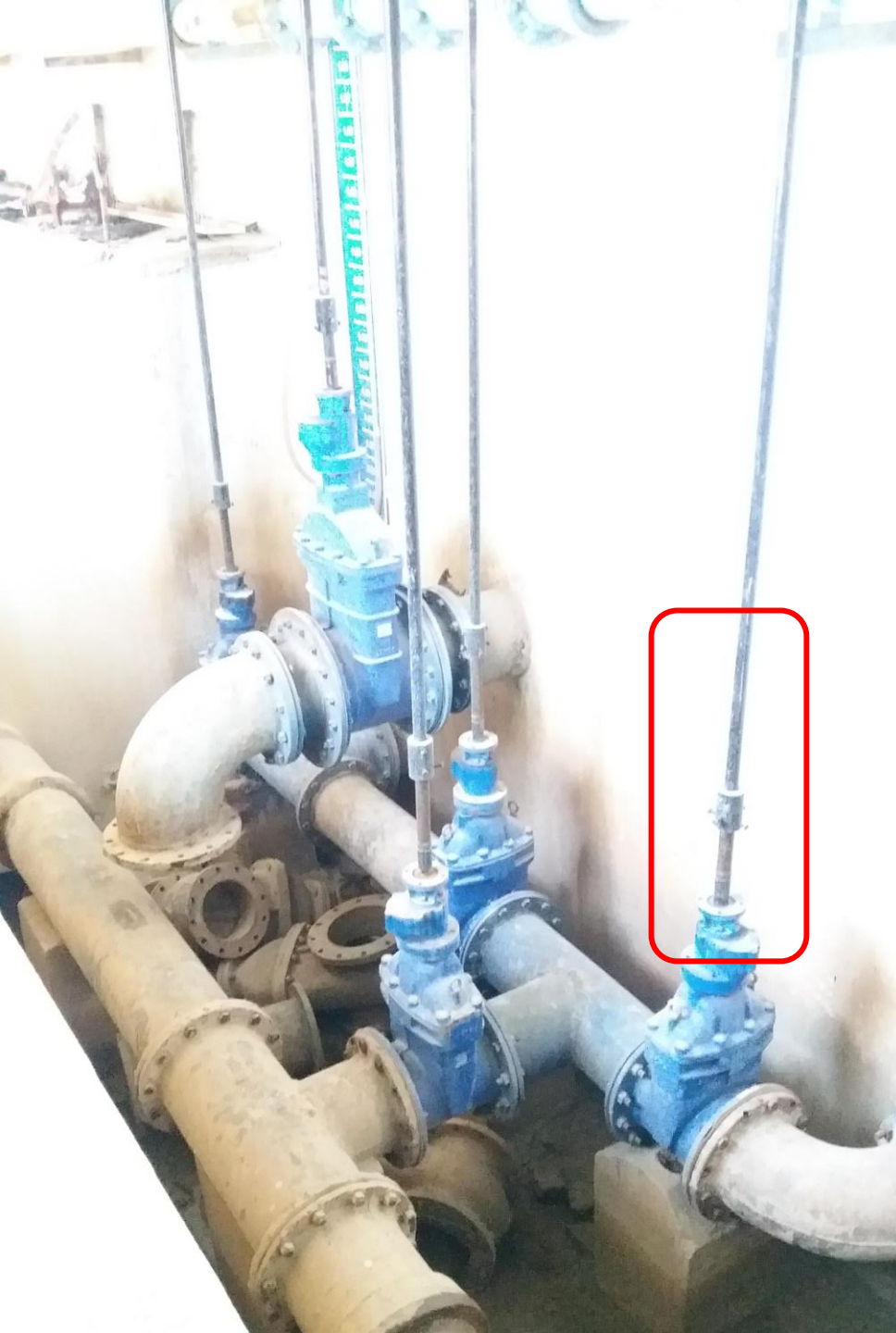
- **Threat of live wires**
- **Difficulty operating by hand in the event of malfunction / power issue.**
- **Lot of open Space requirement – Cost of real estate**
- **Complicated Layouts and difficulty in operating for semi-skilled operators.**
- **Complicated Rotary Actuators mechanism with multiple connections hub for Limit, Torque, Overload, Thermostat etc.**
- **Confusing Actuator Specifications**





- **Submergence Threat**
- **Difficulty Operating Down**
- **Misaligned/Off Centre Extended Spindle resulting in Unbalanced Operating Torque and Valve damage**







Difficult & Time-Consuming Repairs
Expensive Repairs & Manpower
Costs



Congested Gallery & Lot of Mechanical Operation

Advantages of ALPINE DCV-24 Valves with Solenoid Actuator

Simple & Well
Engineered Design.
Hydraulically
Operated.

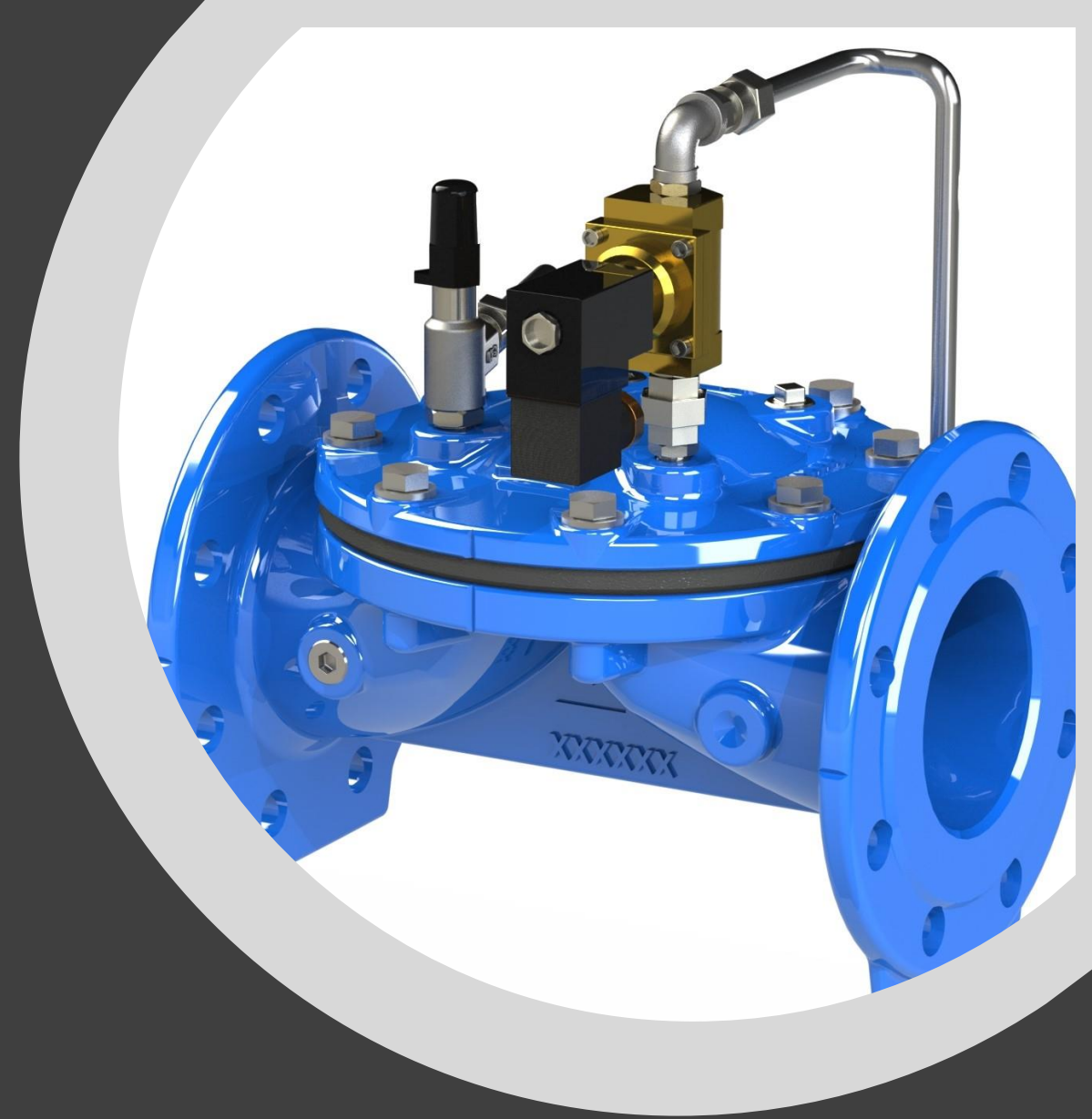
24 vDC Low Cost
Actuator.
SCADA/PLC/RTU
Interphase

Easy to Operate
and In-Line Service.
Minimum Spare
Parts

Better Flow
Characteristics
(Flow Coefficient).

Very Low Head Loss
as the Valve opens
fully

Controlling
application and
Positioning possible



Advantages of ALPINE DCV-24 Valves with Solenoid Actuator

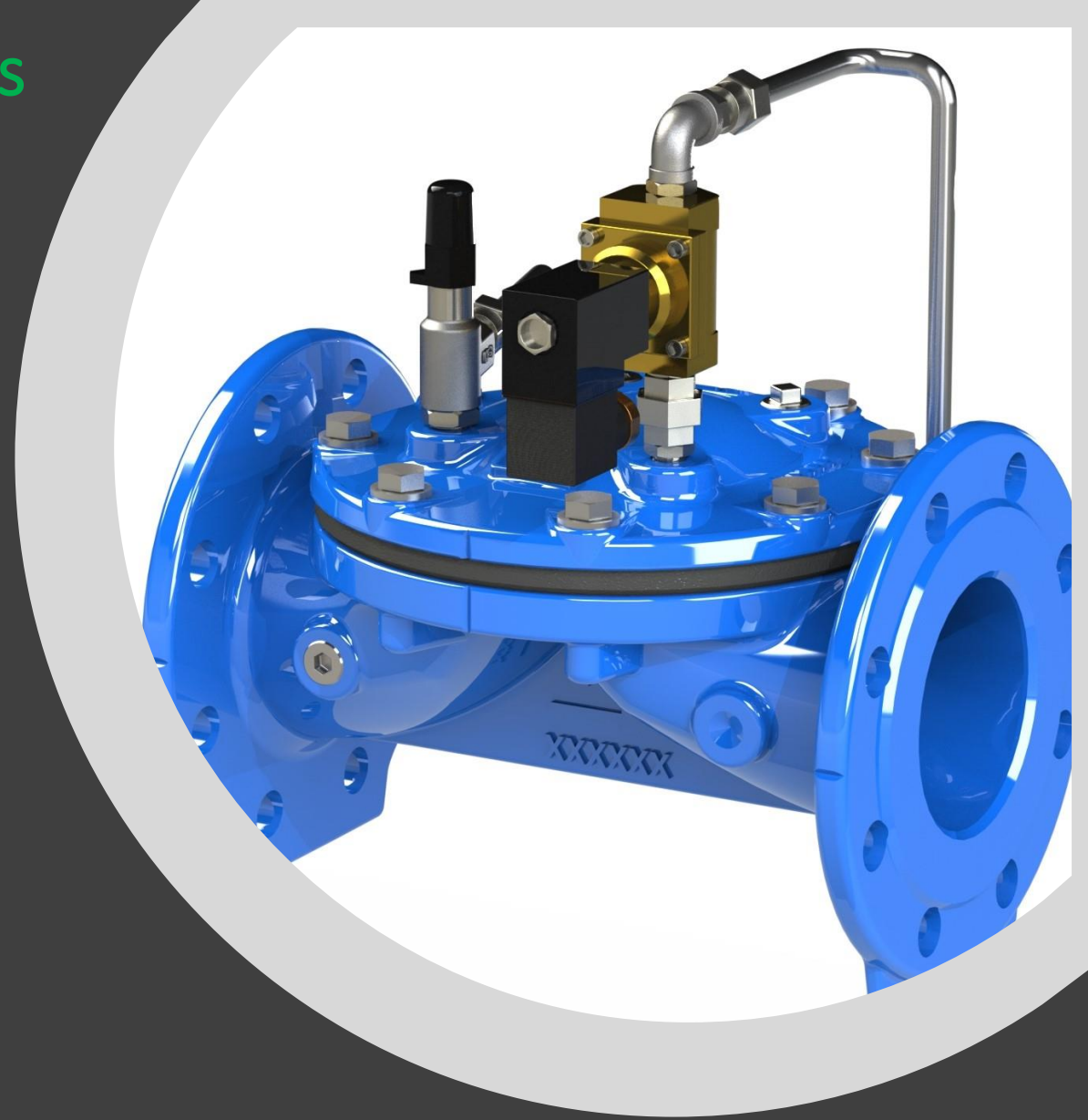
TIME BOUND CAPEX
RECOVERY

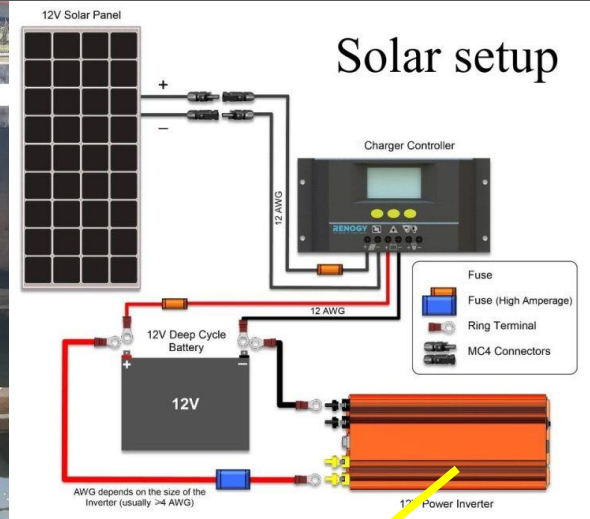
OPTIMIZATION OF 24 vDC
SOLAR POWER SOURCE

OPERATOR FRIENDLY.
MANUAL OVERRIDE TO
OVERCOME EMERGENCIES

DUCTILE IRON FOOD
GRADE WRAS APPROVED
EPOXY COATED BODY AND
EPDM DIAPHRAGM LONG
LIFE CONSTRUCTION

SS 304/316 SPRING
EXTERNAL FASTENERS SS
304. TUBING & FITTINGS IN
SS 304.
SUBMERGENCE RESISTANT





ONE VALVE MULTIPLE APPLICATIONS – ALPINE DCV-24

Economic Replacement, Installation and Integration



॥ अविरत जल प्रदाय ॥

For More Insight:

- Email: alpineflowtech@gmail.com
- Cell: 9324515987
- Cell: 8978558585
- Cell: 9867025324

Techno-Creation – 24 x 7